



Spatial Modeling of Depression and Its Related Factors Using a Spatial Generalized Linear Mixed Model in Mashhad, Iran: A Cross-Sectional Study

Ali Hadianfar¹, Habibollah Esmaily¹, Majid Ghayour-Mobarhan², Hossein Aghajani³, Azadeh Saki^{1,*}, Maryam Tayefi⁴, Fatemeh Hosseini⁵ and Samaneh Sabouri¹

¹Department of Epidemiology and Biostatistics, Mashhad University of Medical Sciences, Mashhad, Iran

²Biochemistry of Nutrition Research Center, Mashhad University of Medical Sciences, Mashhad, Iran

³Department of Sustainable Development Urban and Regional, Academic Center for Education, Culture and Research (ACECR) - Khorasan Razavi Organization, Mashhad, Iran

⁴Endocrinology and Metabolism Research Center, Mashhad University of Medical Sciences, Mashhad, Iran

⁵Department of Statistics, Semnan University, Semnan, Iran

*Corresponding author: Department of Epidemiology and Biostatistics, School of Health, Mashhad University of Medical Sciences, Mashhad, Iran. Tel: +98-9163014565, Email: sakia@mums.ac.ir

Received 2018 December 14; Revised 2019 May 18; Accepted 2019 May 27.

Abstract

Background: Depression is one of the most common mental disorders and it has the third rank of the cause of disability and has been considered to increase the years of life with disability in Iran.

Objectives: The purpose of this study was to map the geographical distribution and find hot spots of depression and its relation to demographic and socioeconomic factors in Mashhad.

Methods: A population-based cross-sectional study was conducted in Mashhad in 2010. In this study, 9704 individuals aged 35 to 65 years old were evaluated using Beck's depression inventory-II. A generalized linear mixed model with a logit link was fitted for the spatial modeling of depression. R and GIS software was used for spatial analysis and disease mapping, respectively.

Results: The prevalence of depression was different in geographical areas, ranging from 13.29% to 26.67%. The spatial correlation in the prevalence of depression was significant. The fitted spatial model showed that the spatial adjusted associations between gender ($P < 0.001$), marital status ($P < 0.001$), socioeconomic status ($P < 0.001$), and depression were significant.

Conclusions: The significant spatial correlation shows that depression is spatially contagious and it is important to find its hot spots in the population. Thus developing health policy for prevention, early diagnostics, and treatment programs is preferred in these resource-limited areas.

Keywords: Depression, Spatial Analysis, Generalized Linear Mixed Model

1. Background

Depression is a common mental disorder globally, with a high rank of disease burden (1). It is the fourth major cause of disability and has a considerable non-fatal burden of disease (2-4). The World Health Organization (WHO) has estimated that by 2020, depression will be the second most common health-related problem after cardiovascular disease (5).

Although accurate information about the prevalence of depression is not available in many countries, it appears to vary widely in its prevalence (6). Depression is the most prevalent, debilitating, and costly mental illness in the United States. Approximately 12% of youth and 16.6% of the adult population had the diagnostic criteria of depres-

sion, including major depression (7).

A national study in Iran has demonstrated that the prevalence of depression was approximately 20%. Depression was found to be the biggest health problem among mental disorders in terms of disability-adjusted life years (DALYs) by the National Burden of Disease and Injury in Iran (8). It is the third major cause of disability and has been considered to increase the years of life with disability in Iran from 2007 to 2017 (9).

Previous studies show that depression has been related to various socioeconomic factors (10), including age, sex, heredity, lifestyle, local social structure, workplace, cultural, and environmental status, which are effective in determining the health of individuals (11). According to the relationship between socioeconomic, cultural, and envi-

ronmental factors with depression, the use of spatial models is necessary to find the geographical distributions and the other related factors.

The geographical distribution of this phenomenon is important, especially in the field of health research and health economics (12). Modeling the spatial distribution of disease is helpful to assess whether health care resources should be uniformly distributed or they should be primarily available in certain areas (13). In many classical statistical methods, the correlation between observations that can cause inflammation of variances is not considered in data analysis.

In fact, we face non-independent observations in most sciences in which they are correlated to each other in terms of location. This is called spatial correlation and such data are known as spatial data. For analyzing spatial data, a new branch of statistics that is called spatial statistics has been developed.

One of the statistical methods used in spatial statistics is the spatial generalized linear mixed model (14). With the assumption of independence in observations, a linear relationship is established between the mean of the observations and covariates using a link function in these models. A generalization of the models mentioned above is a generalized linear mixed model. The correlation between observations is considered a latent variable by adding random effects and independent assumption of observations change to conditional independence. Generalized linear mixed models are used when spatial-dependent data and spatial responses are both discrete distribution of the exponential family (15).

2. Objectives

This study was done with the aim of determining the spatial modeling of depression and its related factors using a generalized linear mixed model with a spatial random effect in Mashhad. This can be used to identify spatial correlation, hot spots, and related socioeconomic factors.

3. Methods

3.1. Data and Participants

The study of Mashhad stroke and heart atherosclerotic disorders (MASHAD) was conducted at Mashhad University of Medical Sciences. It was started in 2010 and will continue until 2020 (16). In the present study, complementary spatial data were added to the baseline of this cohort study. Subjects were drawn from three regions of Mashhad, which is located in North-East of Iran, using a stratified cluster random sampling design and finally, 9415 subjects were enrolled as described before. The protocol was

approved by the Ethics Committee of MUMS and written informed consent was obtained from all subjects before the study (ir.mums.rec.1394.622). After identifying eligible participants, they were contacted to arrange an appointment for the formal physical examination. The demographic data were obtained in a personal interview and for depression testing, the Beck's depression inventory II (BDI-II) was used to measure the severity of depression symptoms.

3.2. Geographic Region

Mashhad is the second most crowded city in Iran. The first step was to provide the standard GIS format based on areas under the control of each of five health centers in Mashhad. According to the subject's address on the map, the specific code of residential block was obtained and Arc GIS was used to present the scattering of interesting factors.

3.3. Input Variables

After cleaning and preparing data, final data contains 9415 records and 5 variables, were divided into 4 input variables as predictor variables and one outcome or target variable. The depression-dependent variable in this model is to form a binary variable measured at the locations. The cut-off for depression was determined using the Beck scores as follows: 0 - 13, minimal; 14 - 19, mild; 20 - 28, moderate; and 29 - 63, severe (17). The cut-off point for depression was > 19 because of the binary response variable. Subjects having moderate and severe depression were classified as depressed and the rest were classified as non-depressed.

Independent variables are age, sex, marital status at four levels, and socioeconomic status at three levels. The socioeconomic status variable in this study was extracted using factor analysis and clustering, based on the variables of education, income, and the number of household members.

3.4. Spatial Generalized Linear Mixed Model

Let Y_i ($i = 1, \dots, n$) is the response variable and x_i ($i = 1, \dots, n$) is observations vector on p explanatory variables. Then the generalized linear model is $g(\mu_i) = x_i^T \beta$, where β is p -dimensional vector of regression coefficients, μ_i is the value of $E(Y_i)$ and $g(\cdot)$ is the link function. Y_i is independent response variable and follows an exponential family of distributions. The generalized linear model is not appropriate for analyzing spatial data or repeated measures because of not considering the correlation between observations. In such cases, generalized linear mixed model is used that is

$$g(\mu_{ij}) = x_{ij}^T \beta + z_{ij}^T b_i$$

$$\mu_{ij} = E(y_{ij}|b_i)$$

Where β is a $p \times 1$ dimensional vector of fixed effects for the covariates of x_{ij} and b_i is a $q \times 1$ dimensional vector of random effects for any individual or clusters associated with the covariates of z_{ij} . Y_{ij} is conditionally independent and follow an exponential family of distributions. When the response variable is discrete and there is a spatial correlation between observations, a spatial prediction is applied using the spatial generalized linear mixed model. Suppose that $D \in R^d$ ($d \geq 1$) is the area of interest and let $Y(s_i)$ be the response variable for $i = 1, \dots, n$ and $x(s_i)$ be p -dimensional vector of explanatory variables for the fixed effects in the position of s_i . Spatial generalized linear mixed model (SGLMM) is given by

$$g(\mu(s_i)) = x^T(s_i)\beta + u(s_i), \quad i = 1, \dots, n$$

$$\mu(s_i) = E(Y(s_i)|u(s_i))$$

Where β is a p -dimensional vector of regression coefficients and $g(\cdot)$ is the link function. $x^T(s_i)\beta$ and $u(s_i)$ are the spatial fixed effect and the spatial random effect of the model, respectively. Logit function is the link function for binomial data, i.e. $g(\mu) = \log[\mu/(1-\mu)]$. Spatial correlation is important in such models and for checking that a Monte Carlo test can be utilized by variogram. Exchanging the data values across the locations is possible when we do not have a spatial correlation. So we can do the test by transposing data locations and calculating the variogram for each of them. Variogram “envelopes” compute by minimum and maximum values at each bin and eventually, we plot the variogram of the original data to examine whether it is inside the envelopes (18).

An important issue in SGLMM is predicting latent variables in locations with no observation, which requires estimation of parameters and latent variables in situations where the response variable is observed. In practice, model parameters are unknown and should be estimated. A general method for estimating parameters is the maximum likelihood approach, which is done using numerical algorithms because of the complexity and lack of closed form for the likelihood function. Researchers have introduced several numerical methods for the numerical approximation of these integrals. Christensen estimated parameters of SGLMM with the normality assumption of latent variables using maximum likelihood method and Monte Carlo algorithm (19).

3.5. Modeling

Logit link function was used for the spatial generalized linear mixed model. The model was as follows for individual probability of depression in location (s_i)

$$\log it(p(s_i)) = \eta(s_i)$$

$$\eta(s_i) = \beta_0 + \beta_1 Age(s_i) + \beta_2 Sex(s_i) + \beta_3 Sec(s_i) + \beta_4 Marriage(s_i) + u(s_i)$$

Where $u(s_i)$ ($i = 1, \dots, 9415$) is a Gaussian random field with mean zero and covariance function. A Gaussian covariance function was used that is

$$C(h, \theta) = \sigma^2 \exp\left(-\frac{\|h\|}{\phi}\right)$$

σ^2 represents the variation of the spatial correlation that arises with spatial heterogeneity and denotes the range (the maximum distance when there is a spatial correlation between observations).

R and ArcGIS were used for data analysis and investigation of the research hypothesis. Spatial analysis was performed using the geoR package in R (version 3.1.2). The model parameters were estimated by a Markov chain Monte Carlo (MCMC) algorithm in the package geoRglm that is an extension of geoR package (18).

4. Results

4.1. Description of the Participants

The percentage of male and female among 9415 participants were 3802 (40.4%) and 5613 (59.6%), respectively. The total prevalence of moderate and severe depression was 20.6%.

Table 1 provides a description of demographic features of the population, comparing the two groups of depressed and non-depressed participants. The overall mean age of subjects was 48.07 ± 8.26 years and there was no significant difference in the mean age between the two groups ($P = 0.39$). A significantly higher prevalence of depression was observed among females ($P < 0.001$) and divorced people ($P < 0.001$). The prevalence of depression has a direct relation with socioeconomic status ($P < 0.001$).

4.2. Geographical Distribution of Depression Prevalence

Health care is provided to the Mashhad population by five health centers and according to our investigation, the highest prevalence of depression occurred in Health Center No. 5 (26.67%) (Table 2).

The prevalence of depression based on longitude and latitude is illustrated in a point map (Figure 1) that by considering holy shrine as the city center, this map shows depression is growing as the distance from the city center increases.

An exploratory analysis tool that is widely used in geostatistics is the variogram (20). The empirical variogram

Table 1. Sociodemographic Characteristics of the MASHAD Study Population in 2010^a

Variables	Total (N = 9415)	Depressed (N = 1940)	Non-Depressed (N = 7475)	P Value ^b
Mean age, y	48.07 ± 8.26	47.9 ± 8.4	48.1 ± 8.2	0.39
Sex				< 0.001
Male	3802	565 (14.9)	3237 (85.1)	
Female	5613	1375 (24.5)	4238 (75.5)	
Marital status				< 0.001
Married	8799	1752 (19.9)	7047 (80.1)	
Single	54	15 (27.8)	39 (72.2)	
Widow	444	132 (29.7)	312 (70.3)	
Divorced	118	41 (34.7)	77 (65.3)	
Socioeconomic				< 0.001
Low	1869	519 (27.8)	878 (72.2)	
Moderate	5152	1040 (20.2)	374 (79.8)	
High	2394	381 (15.9)	109 (84.1)	

^aValues are expressed as mean ± SD or No. (%).

^bMean differences by depression status are tested using two-tailed t-tests for age and chi-square tests are used for others.

**Figure 1.** The Prevalence of depression based on longitude and latitude: Mashhad Stroke and Heart Atherosclerotic Disorder study, Iran, 2010

represents the relationship between that separation distances, binned into intervals. There was a significant spatial correlation at a distance less than 5000 meters (Figure 2). Also, based on Moran's I-statistic, there was a significant spatial autocorrelation among the prevalence of depression in different areas ($P < 0.001$).

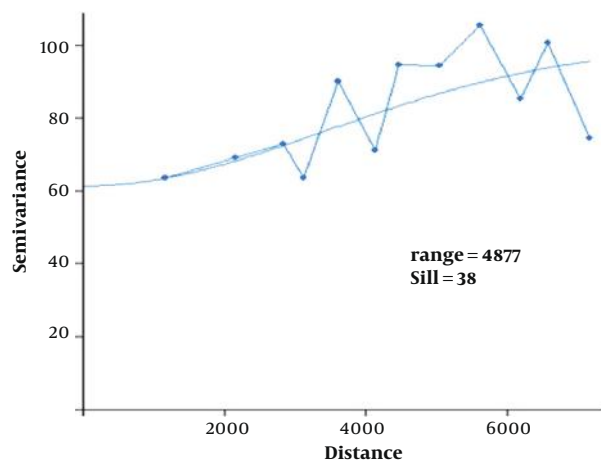
Results from the non-spatial and spatial logistic mixed models are given in Table 3. In general, sex, marital, and so-

cioeconomic statuses were associated with depression after adjusting for spatial correlation. The final spatial model is as follows:

$$\eta(s_i) = -2.66 + 0.54 \text{Sex}(s_i) + 1.75 \text{Sec}(s_i) + 1.29 \text{Marriage}(s_i) + u(s_i)$$

Table 2. The Prevalence of Depression in Mashhad Health Centers

Health Center	Sample Size	Depressed, No. (%)
Health Center 1	3414	787 (23.05)
Health Center 2	1543	205 (13.3)
Health Center 3	2892	541 (18.7)
Health Center 4	209	46 (20.1)
Health Center 5	1357	362 (26.67)

**Figure 2.** Empirical variogram: Mashhad Stroke and Heart Atherosclerotic Disorder study, Iran, 2010

4.3. Spatial Prediction

The predicted prevalence of the final spatial model is illustrated on a map (Figure 3). This map showed the areas with the lowest risk to highest risk of depression in the area of study. The accuracy of the model was evaluated with the area under the receiver operating characteristic curve (ROC AUC) and 95% confidence interval for it. The AUC = 0.67 with confidence interval, CI 95% = (0.64, 0.705).

5. Discussion

The present study shows that the overall prevalence rate of depression was 20.6% in Mashhad and it is significantly higher in females. These results supported a study carried out in Tehran that showed the overall prevalence rate of depression was 22.5%, 29.2% in females and 16% in males (21). The prevalence rate of depression is one of the most useful information for planning secondary and tertiary prevention activities in every society (22).

In this study, age was not a risk factor for depression, while marital status was associated with depression. Married people have comparatively low depression rates. These results were supported by previous studies (23-25).

Table 3. The Result of Non-Spatial and Spatial Logistic Mixed Model

Variables	Non-Spatial Model, Odds Ratio (CI 95%)	Spatial Logistic Mixed Model, Odds Ratio (CI 95%)
B_0	0.27 (0.17, 0.4)	0.07 (0.06, 0.08)
Age, y	1.003 (0.99, 1.01)	0.93 (0.94, 0.9)
Sex		
Male	Reference	Reference
Female	1.8 (1.6, 2.0)	1.72 (1.5, 1.9)
Marital status		
Married	Reference	Reference
Single	1.4 (0.77, 2.6)	1.68 (0.85, 3.3)
Widow	1.5 (1.01, 2.2)	1.22 (0.9, 1.6)
Divorced	1.26 (1.07, 1.6)	1.77 (1.13, 2.7)
Socioeconomic(sec)		
Low	1.9 (1.63, 2.22)	2.58 (2.03, 3.3)
Moderate	1.2 (1.07, 1.4)	2.2 (1.89, 2.6)
High	Reference	Reference
Spatial dependence		
φ	-	1.13 (0.92, 1.4)
σ^2	-	20.1 (6.1, 66.6)

Also, socioeconomic status was significantly related to the depression, which is consistent with several previous pieces of evidence, including studies by Freeman et al. (26), Domenech-Abella et al. (27), Hoebel et al. (28), and Azizod-din et al. (29).

Our findings on the relationship between socioeconomic status and depression showed that a higher socioeconomic status was associated with a lower index of depression. These results were also supported by the predicted prevalence map based on the model (Figure 3). Iran's urban population studies have also shown that socioeconomic status is associated with depression (30, 31).

A study conducted in Korea to investigate whether gaps between socioeconomic stratum and subjective social class affect the prevalence of depressive symptoms. In this study, they fitted a generalized linear mixed model with a binary distribution. It was found the gap between socioeconomic stratum and perceived position in the social hierarchy explains a substantial part of inequalities in the prevalence of depressive symptoms (32).

Using a geographical information system (GIS) enabled us to identify spatial patterns of depression. Geographical maps based on the spatial generalized linear mixed model showed the prevalence of depression varies in different parts of Mashhad. The highest rate was observed in areas being served by Health Center No. 5, which

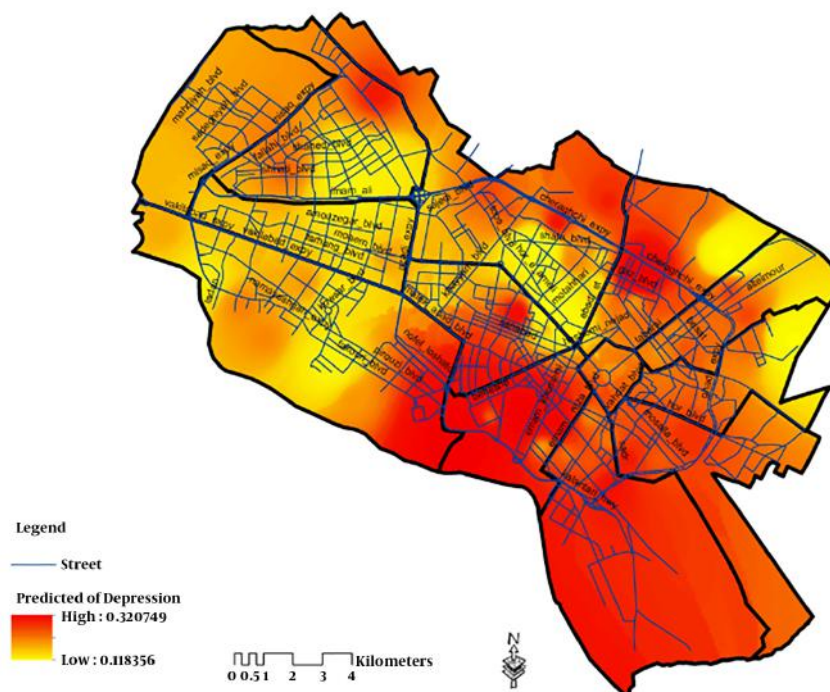


Figure 3. The predicted prevalence map based on the model: Mashhad Stroke and Heart Atherosclerotic Disorder study, Iran, 2010

may be explained by at least two reasons: marginalization and airport noise pollution. According to the population information of Mashhad University of Medical Sciences, the most marginalized population was observed in this area (69.6%). This population is very poor and the urban facilities are very low in those areas. Another reason is the airport noise pollution in this area. Studies have shown that people who live near airports are exposed to a greater extent of various diseases, including mental disorders (33-35). Mashhad International Airport is the second-high traffic airport in Iran and is located close to the residential areas under the supervision of Health Center No. 5, which is known as the main source of noise pollution in this area.

Few studies have previously investigated the ecological distribution of depression. In this cross-sectional study, exploratory spatial data analysis showed the rate of depression increases by distance from the city center. The rate of depression is higher in marginalized areas of the city and also it can be seen a significant spatial correlation in the prevalence of depression.

A previous study report that living near depressed people induces depression, so depression is contagious (36). The important spatial result of the present study is a significant spatial correlation that means depression is spatially contagious. Therefore, depression may spread from

hot spots to other areas.

5.1. Conclusions

Our findings represent an important contribution to public health in our community. The prevalence of depression is relatively high in our community, so developing action plans is essential to prevent this disease. Owing to the spatially contagious of depression screening strategy, mapping techniques and spatial analysis are useful for identifying hot spots which require government intervention to treat the depressed population and prevent further spread of disease.

Acknowledgments

This article is from the master's thesis of Mr. Ali Hadianfar (research code: 940855) at Mashhad University of Medical Sciences. The authors appreciated of the Vice-Chancellor for Research in Mashhad University of Medical Sciences and all those involved in implementation of this study.

Footnotes

Authors' Contribution: Drafting the manuscript and doing statistical and spatial analysis: Ali Hadianfar; su-

persiving the methodological approach and critical revision of the manuscript for important intellectual content: Azadeh Saki; substantial contributions to the conception and design of the primary study: Habibollah Esmaily and Majid Ghayour-Mobarhan; contribution in spatial analysis and mapping data: Hossein Aghajan and Fatemeh Hosseini; data cleaning and preparation: Maryam Tayefi, and Samaneh Sabouri.

Conflict of Interests: The authors declare that there is no conflict of interest.

Ethical Approval: ir.mums.rec.1394.622.

Funding/Support: Mashhad University of Medical Sciences.

References

- Veerma J, Dowrick C, Ayuso-Mateos JL, Dunn G, Barendregt JJ. Population prevalence of depression and mean Beck Depression Inventory score. *Br J Psychiatry*. 2009;**195**(6):516–9. doi: [10.1192/bjp.bp.109.066191](https://doi.org/10.1192/bjp.bp.109.066191). [PubMed: [19949201](https://pubmed.ncbi.nlm.nih.gov/19949201/)].
- Ferrari AJ, Charlson FJ, Norman RE, Patten SB, Freedman G, Murray CJ, et al. Burden of depressive disorders by country, sex, age, and year: Findings from the global burden of disease study 2010. *PLoS Med*. 2013;**10**(11):e1001547. doi: [10.1371/journal.pmed.1001547](https://doi.org/10.1371/journal.pmed.1001547). [PubMed: [24223526](https://pubmed.ncbi.nlm.nih.gov/24223526/)]. [PubMed Central: [PMC3818162](https://pubmed.ncbi.nlm.nih.gov/PMC3818162/)].
- Jamison DT, Breman JG, Measham AR, Alleyne G, Claeson M, Evans DB. *Disease control priorities in developing countries*. 2nd ed. New York: Oxford University Press; 2006.
- Lopez AD, Mathers CD, Ezzati M, Jamison DT, Murray CJ. Global and regional burden of disease and risk factors, 2001: Systematic analysis of population health data. *Lancet*. 2006;**367**(9524):1747–57. doi: [10.1016/S0140-6736\(06\)68770-9](https://doi.org/10.1016/S0140-6736(06)68770-9). [PubMed: [16731270](https://pubmed.ncbi.nlm.nih.gov/16731270/)].
- Ebrahimi A. [Effectiveness of integrated treatment of religious, cognitive behavioral and drug therapy on Depression and dysfunctional attitudes of patients with dysthymic disorder] [dissertation]. Isfahan University; 2009. Persian.
- Bromet E, Andrade LH, Hwang I, Sampson NA, Alonso J, de Girolamo G, et al. Cross-national epidemiology of DSM-IV major depressive episode. *BMC Med*. 2011;**9**(1):90. doi: [10.1186/1741-7015-9-90](https://doi.org/10.1186/1741-7015-9-90). [PubMed: [21791035](https://pubmed.ncbi.nlm.nih.gov/21791035/)]. [PubMed Central: [PMC3163615](https://pubmed.ncbi.nlm.nih.gov/PMC3163615/)].
- Duncan DT, Piras G, Dunn EC, Johnson RM, Melly SJ, Molnar BE. The built environment and depressive symptoms among urban youth: A spatial regression study. *Spat Spatiotemporal Epidemiol*. 2013;**5**:11–25. doi: [10.1016/j.sste.2013.03.001](https://doi.org/10.1016/j.sste.2013.03.001). [PubMed: [23725884](https://pubmed.ncbi.nlm.nih.gov/23725884/)]. [PubMed Central: [PMC3734378](https://pubmed.ncbi.nlm.nih.gov/PMC3734378/)].
- Naghavi M, Abolhassani F, Pourmalek F, Lakeh M, Jafari N, Vaseghi S, et al. The burden of disease and injury in Iran 2003. *Popul Health Metr*. 2009;**7**:9. doi: [10.1186/1478-7954-7-9](https://doi.org/10.1186/1478-7954-7-9). [PubMed: [19527516](https://pubmed.ncbi.nlm.nih.gov/19527516/)]. [PubMed Central: [PMC2711041](https://pubmed.ncbi.nlm.nih.gov/PMC2711041/)].
- Ferrer-Mayorga G, Gomez-Lopez G, Barbachano A, Fernandez-Barral A, Pena C, Pisano DG, et al. Vitamin D receptor expression and associated gene signature in tumour stromal fibroblasts predict clinical outcome in colorectal cancer. *Gut*. 2017;**66**(8):1449–62. doi: [10.1136/gutjnl-2015-310977](https://doi.org/10.1136/gutjnl-2015-310977). [PubMed: [27053631](https://pubmed.ncbi.nlm.nih.gov/27053631/)]. [PubMed Central: [PMC5530491](https://pubmed.ncbi.nlm.nih.gov/PMC5530491/)].
- Rodero-Cosano ML, Salinas-Perez JA, Gonzalez-Caballero JL, Garcia-Alonso CR, Lagares-Franco C, Salvador-Carulla L, editors. The relationships between depression spatial clusters and mental health planning in Catalonia (Spain). *Computational Science and Its Applications - ICCSA 2014: 14th International Conference*. Guimaraes, Portugal. Springer International Publishing; 2014. p. 438–47.
- European Sustainable Cities and Towns Campaign. *City planning for health and sustainable development (European sustainable development and health series No. 2)*. Copenhagen: World Health Organization; 1997. 2 p.
- Perez-Ortiz M, Gutierrez PA, Garcia-Alonso C, Salvador-Carulla L, Salinas-Perez JA, Hervas-Martinez C, editors. Ordinal classification of depression spatial hot-spots of prevalence. *11th International Conference on Intelligent Systems Design and Applications (ISDA)*. Cordoba, Spain. IEEE; 2011. p. 1170–5.
- Chaix B, Leyland AH, Sabel CE, Chauvin P, Rastam L, Kristersson H, et al. Spatial clustering of mental disorders and associated characteristics of the neighbourhood context in Malmo, Sweden, in 2001. *J Epidemiol Community Health*. 2006;**60**(5):427–35. doi: [10.1136/jech.2005.040360](https://doi.org/10.1136/jech.2005.040360). [PubMed: [16614334](https://pubmed.ncbi.nlm.nih.gov/16614334/)]. [PubMed Central: [PMC2563968](https://pubmed.ncbi.nlm.nih.gov/PMC2563968/)].
- McCullagh P, Nelder JA. *Generalized linear models*. CRC press; 1989.
- Niv Y, Sperber AD, Figer A, Igael D, Shany S, Fraser G, et al. In colorectal carcinoma patients, serum vitamin D levels vary according to stage of the carcinoma. *Cancer*. 1999;**86**(3):391–7. doi: [10.1002/\(sici\)1097-0142\(19990801\)86:3<391::aid-cnrcr5>3.0.co;2-a](https://doi.org/10.1002/(sici)1097-0142(19990801)86:3<391::aid-cnrcr5>3.0.co;2-a).
- Ghayour-Mobarhan M, Moohebbati M, Esmaily H, Ebrahimi M, Parizadeh SM, Heidari-Bakavoli AR, et al. Mashhad stroke and heart atherosclerotic disorder (MASHAD) study: Design, baseline characteristics and 10-year cardiovascular risk estimation. *Int J Public Health*. 2015;**60**(5):561–72. doi: [10.1007/s00038-015-0679-6](https://doi.org/10.1007/s00038-015-0679-6). [PubMed: [25943424](https://pubmed.ncbi.nlm.nih.gov/25943424/)].
- Beck AT, Steer RA, Brown GK. *Manual for the Beck depression inventory-II*. San Antonio, TX: Psychological Corporation; 1996.
- Ribeiro Jr PJ, Christensen OF, Diggle PJ, editors. *geoR and geoRglm: Software for model-based geostatistics. Proceedings of the 3rd International Workshop on Distributed Statistical Computing (DSC 2003)*. 2003.
- Christensen OF. Monte Carlo maximum likelihood in model-based geostatistics. *J Comput Graph Stat*. 2012;**13**(3):702–18. doi: [10.1198/106186004x2525](https://doi.org/10.1198/106186004x2525).
- Diggle PJ, Tawn JA, Moyeed RA. Model-based geostatistics. *J Roy Stat Soc*. 1998;**47**(3):299–350. doi: [10.1111/1467-9876.00113](https://doi.org/10.1111/1467-9876.00113).
- Nazari H, Hormozi K, Mashayekhi F, Valizadeh M, Falahati F. [Prevalence of depression in Tehran]. *Yafteh*. 2002;**3**(11):23–7. Persian.
- Almeida OP. Prevention of depression in older age. *Maturitas*. 2014;**79**(2):136–41. doi: [10.1016/j.maturitas.2014.03.005](https://doi.org/10.1016/j.maturitas.2014.03.005). [PubMed: [24713453](https://pubmed.ncbi.nlm.nih.gov/24713453/)].
- Bulloch AGM, Williams JVA, Lavorato DH, Patten SB. The depression and marital status relationship is modified by both age and gender. *J Affect Disord*. 2017;**223**:65–8. doi: [10.1016/j.jad.2017.06.007](https://doi.org/10.1016/j.jad.2017.06.007). [PubMed: [28732242](https://pubmed.ncbi.nlm.nih.gov/28732242/)].
- Montazeri A, Mousavi SJ, Omidvari S, Tavousi M, Hashemi A, Rostami T. [Depression in Iran: A systematic review of the literature (2000–2010)]. *Payesh*. 2013;**12**(6):567–94. Persian.
- Liu Q, Cai H, Yang LH, Xiang YB, Yang G, Li H, et al. Depressive symptoms and their association with social determinants and chronic diseases in middle-aged and elderly Chinese people. *Sci Rep*. 2018;**8**(1):3841. doi: [10.1038/s41598-018-22175-2](https://doi.org/10.1038/s41598-018-22175-2). [PubMed: [29497126](https://pubmed.ncbi.nlm.nih.gov/29497126/)]. [PubMed Central: [PMC5832867](https://pubmed.ncbi.nlm.nih.gov/PMC5832867/)].
- Freeman A, Tyrovolas S, Koyanagi A, Chatterji S, Leonardi M, Ayuso-Mateos JL, et al. The role of socio-economic status in depression: Results from the COURAGE (aging survey in Europe). *BMC Public Health*. 2016;**16**(1):1098. doi: [10.1186/s12889-016-3638-0](https://doi.org/10.1186/s12889-016-3638-0). [PubMed: [27760538](https://pubmed.ncbi.nlm.nih.gov/27760538/)]. [PubMed Central: [PMC5069819](https://pubmed.ncbi.nlm.nih.gov/PMC5069819/)].
- Domenech-Abella J, Mundo J, Leonardi M, Chatterji S, Tobiasz-Adamczyk B, Koskinen S, et al. The association between socioeconomic status and depression among older adults in Finland, Poland and Spain: A comparative cross-sectional study of distinct measures and pathways. *J Affect Disord*. 2018;**241**:311–8. doi: [10.1016/j.jad.2018.08.077](https://doi.org/10.1016/j.jad.2018.08.077). [PubMed: [30142590](https://pubmed.ncbi.nlm.nih.gov/30142590/)].
- Hoebel J, Maske UE, Zeeb H, Lampert T. Social inequalities and depressive symptoms in adults: The role of objective and subjective socioeconomic status. *PLoS One*. 2017;**12**(1). e0169764. doi: [10.1371/journal.pone.0169764](https://doi.org/10.1371/journal.pone.0169764).

- 10.1371/journal.pone.0169764. [PubMed: 28107456]. [PubMed Central: PMC5249164].
29. Azizoddin DR, Zamora-Racaza G, Ormseth SR, Sumner LA, Cost C, Ayeroff JR, et al. Psychological factors that link socioeconomic status to depression/anxiety in patients with systemic Lupus Erythematosus. *J Clin Psychol Med Settings*. 2017;**24**(3-4):302-15. doi: [10.1007/s10880-017-9505-z](https://doi.org/10.1007/s10880-017-9505-z). [PubMed: 28776205].
 30. Modabernia MJ, Tehrani HS, Fallahi M, Shirazi M, Modabernia AH. Prevalence of depressive disorders in Rasht, Iran: A community based study. *Clin Pract Epidemiol Ment Health*. 2008;**4**:20. doi: [10.1186/1745-0179-4-20](https://doi.org/10.1186/1745-0179-4-20). [PubMed: 18601715]. [PubMed Central: PMC2481263].
 31. Morasae EK, Forouzan AS, Majdzadeh R, Asadi-Lari M, Noorbala AA, Hosseinpoor AR. Understanding determinants of socioeconomic inequality in mental health in Iran's capital, Tehran: A concentration index decomposition approach. *Int J Equity Health*. 2012;**11**(1):18. doi: [10.1186/1475-9276-11-18](https://doi.org/10.1186/1475-9276-11-18). [PubMed: 22449237]. [PubMed Central: PMC3342912].
 32. Kim JH, Lee SG, Shin J, Park EC. Impact of the gap between socioeconomic stratum and subjective social class on depressive symptoms: Unique insights from a longitudinal analysis. *Soc Sci Med*. 2014;**120**:49-56. doi: [10.1016/j.socscimed.2014.09.001](https://doi.org/10.1016/j.socscimed.2014.09.001). [PubMed: 25218153].
 33. Hammersen F, Niemann H, Hoebel J. Environmental noise annoyance and mental health in adults: Findings from the cross-sectional German health update (GEDA) study 2012. *Int J Environ Res Public Health*. 2016;**13**(10). doi: [10.3390/ijerph13100954](https://doi.org/10.3390/ijerph13100954). [PubMed: 27681736]. [PubMed Central: PMC5086693].
 34. Araghi M, Yaghobi MM. The study of noise pollution caused by Birjand airport on the surrounding residents. *India J Sci Tech*. 2015;**8**(11):1. doi: [10.17485/ijst/2015/v8i11/71777](https://doi.org/10.17485/ijst/2015/v8i11/71777).
 35. Van Kamp I, Davies H, editors. Environmental noise and mental health: Five year review and future directions. Noise as a public health problem. *Proceedings of 9th Congress of the International Commission on the Biological Effects of Noise (ICBEN)*. 2008.
 36. Joiner TE Jr. Contagious depression: Existence, specificity to depressed symptoms, and the role of reassurance seeking. *J Pers Soc Psychol*. 1994;**67**(2):287-96. [PubMed: 7932064].